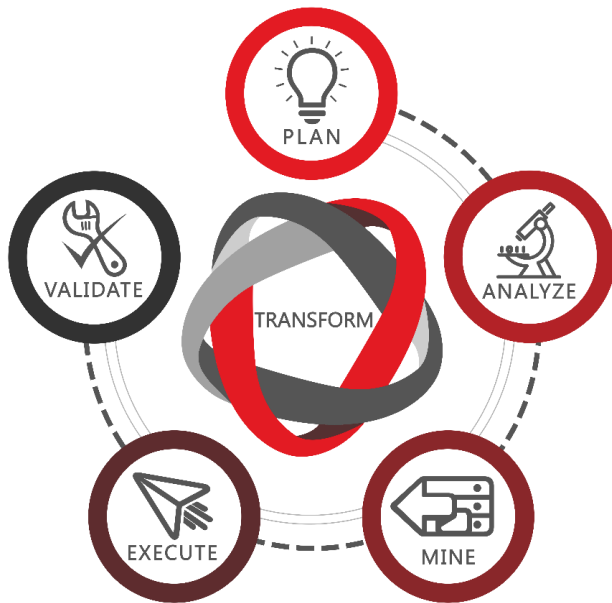




## Software Solutions for Oracle E-Business Suite®

*Accelerate change, align with new business initiatives, and transform your data into a strategic asset with eprentise®.*



eprentise software gives business leaders more control by allowing many changes in E-Business Suite from changing charts of accounts, purging or filtering data, and reorganizing your existing structures such as calendars or legal entities.

eprentise compares source and target data and, using its rules-based software determines rules needed to transform the source data into the target while maintaining the relational and data integrity.

**COMPLETE | CONSISTENT | CORRECT**

Simply define a target data structure (i.e a new calendar, a new flexfield, etc.) and the underlying Metadata Analysis engine finds all the related data that will be impacted by the changes to the source data to get the desired results. After all the rules are identified, use templates to copy, filter, change, move, and merge to transform the source data into the target. The templates execute the rules in the right sequence to get the correct results.

Maintain data integrity throughout business changes with a tool, powered by eprentise's extensive Knowledge Repository, that can identify and resolve (in correct sequence) any gaps between source and target, resulting in data that is better aligned with current and future business processes.

### **CONFIDENTLY MAKE CHANGES TO ORACLE E-BUSINESS SUITE®**

- **without:** reimplementation
- **without:** loss of history or risk of data compromise
- **without:** scripts to write to extract/transform/load data
- **without:** coding, bridges to reconcile, or unit testing

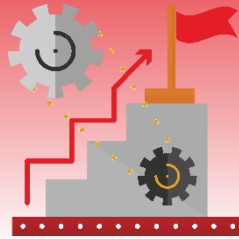
### **MAINTAIN TRANSPARENCY WITH A FULL AUDIT TRAIL AND REPORTS**

# Benefits of a Software Approach



## ***FlexField®***

Minimize Workarounds



## ***Reorganization***

Simplify the Close Process/Reporting



## ***Crystallize Analytics***

Identify Data/Process Anomalies



## ***Mergers & Acquisitions***

Align your EBS with Corporate Initiatives

## ***INCREASED EFFICIENCY - REDUCING PROJECT TIMELINES, COSTS, AND IMPROVING ACCURACY OF OUTCOMES***

- Less than half the time and cost of comparable consulting services
- No reimplementation, no migration scripts, and no loss of history
- Reduced risk of compromising the data integrity by writing code to extract and load data incorrectly

## ***OPERATIONAL PRODUCTIVITIES***

- Better customer service resulting from data consistency
- More accurate reporting with a consistent data source
- Increased agility to make organizational and operational changes quickly and to analyze and predict enterprise performance based on complete, consistent, and correct data
- Reduced database footprint for a divestiture or carve-out resulting in improved performance, improved ease of maintenance, and less risk in the event of a data breach
- Reduced complexity resulting in shorter close cycles and increased transparency
- Alignment of new strategic initiatives such as mergers, acquisitions, or divestitures

## ***RULES-BASED SYSTEM WITH COMPREHENSIVE KNOWLEDGE REPOSITORY***

- User-defined business rules executed without coding
- Changes made to the complete data set (all modules, all EBS versions)
- Out-of-the-box software minimizes risks and eliminates expensive migration efforts

## FLEXFIELD®

Allows companies to **change and model** their Charts of Accounts in Oracle E-Business Suite as often as they change their business. With a built-in knowledge base, FlexField® provides a low-risk, low-cost way to make rapid changes to the accounting flexfield out of the box.

- Change your Chart of Accounts at will – add or delete a segment or value
- Reduce maintenance of multiple Charts of Accounts and cross-validation rules
- Streamline and standardize accounting practices saving resources that hamper performance
- Improve accuracy of global reporting and fully utilize Advanced Global Intercompany System (AGIS), Ledger Sets, and Subledger Accounting
- Restructure financial transactions to accurately reflect business changes

## DIVESTITURE

**Creates** two **separate** database instances, one for the parent company and one for the carved-out company. Each company's application has only its own data, ensuring that the parent company is comfortable with data security and enabling the divested company to function completely on its own. Using sophisticated filtering criteria, the software can separate data at any level resulting in complete, consistent, and correct information so that both the parent and child can operate completely independently.

- Removes data defined by user criteria to a separate, fully functional divested database instance
- Both source and divested instances maintain relational integrity of configuration data, master data, and transactions
- Accurately assess the value of the business by allowing both the buyer and seller to drill down to transaction level detail to validate the actual value of the business operations

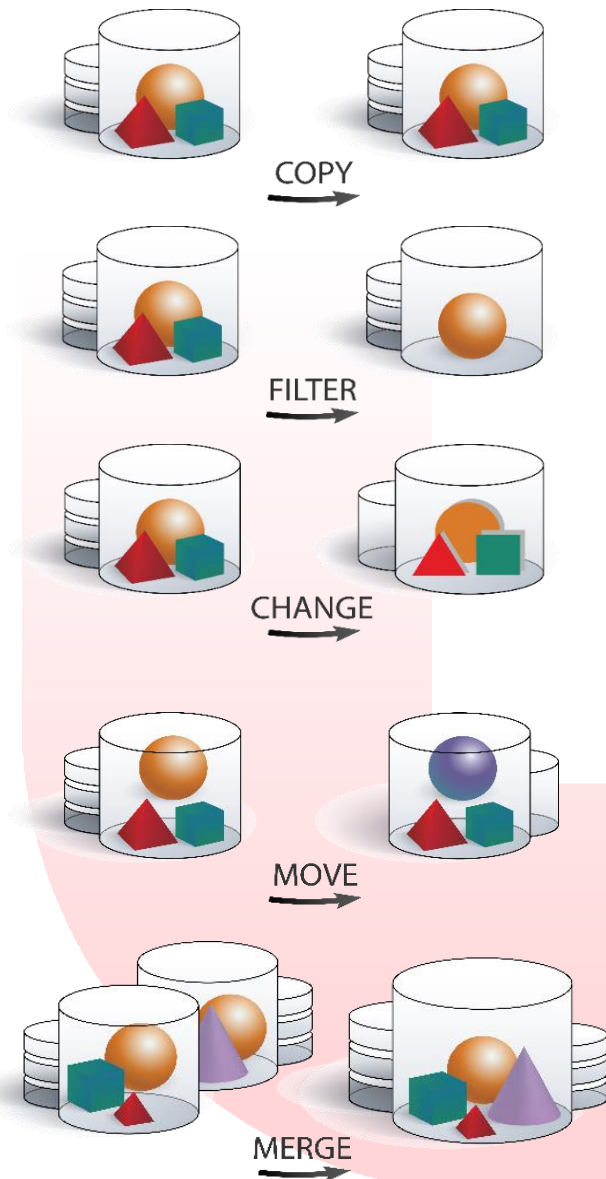
## CALENDAR CHANGE

**Automates** the process of changing calendars in Oracle E-Business Suite, allowing you to support the business

requirements, retain history, and tie in all the subledger detail with the GL calendar. **Align** your calendars after an acquisition or for a mid-month close or match to the acquiring company's calendar for rapid integration with a new parent company

- Transactions from the subledgers are automatically aligned to the correct period based on the transaction date when the period dates are changed
- No need to remove future dated entries
- Create a short year with adjusting periods to change the year-end date
- Revalue assets after an acquisition to comply with GAAP rules
- Align multiple calendars to streamline the close process and reporting

## REORGANIZATION



eprentise Reorganization software allows companies to make a variety of **major configuration or setup changes** to better reflect their business structure and operations in Oracle E-Business Suite. These changes are made in-place, resulting in a database that looks as though EBS had always been configured this way. This means large-scale transformation can occur without loss of history, without reimplementation, and without building bridges to reconcile later.

These changes take form with the help of five transformative actions - **COPY, FILTER, CHANGE, MOVE, AND MERGE** and can effect change over all structures and setups of EBS.

eprentise Reorganization modules include:

- Move **LEGAL ENTITIES** to a new **LEDGER** to reflect the current organization structure, comply with local and statutory requirements, and restructure the enterprise for global expansion
- Change a **CALENDAR** to align with new reporting requirements
- Repoint **LEGAL ENTITIES** and **OU**s to simplify taxes and streamline operations

## INTERESTED?

For more information, visit [www.eprentise.com](http://www.eprentise.com) or email us at [info@eprentise.com](mailto:info@eprentise.com) to schedule a demo today!