

# Clouds in the Horizon

What's the Best Oracle  
Fusion Strategy for  
Those Still in 11i or R12?



Presenter:

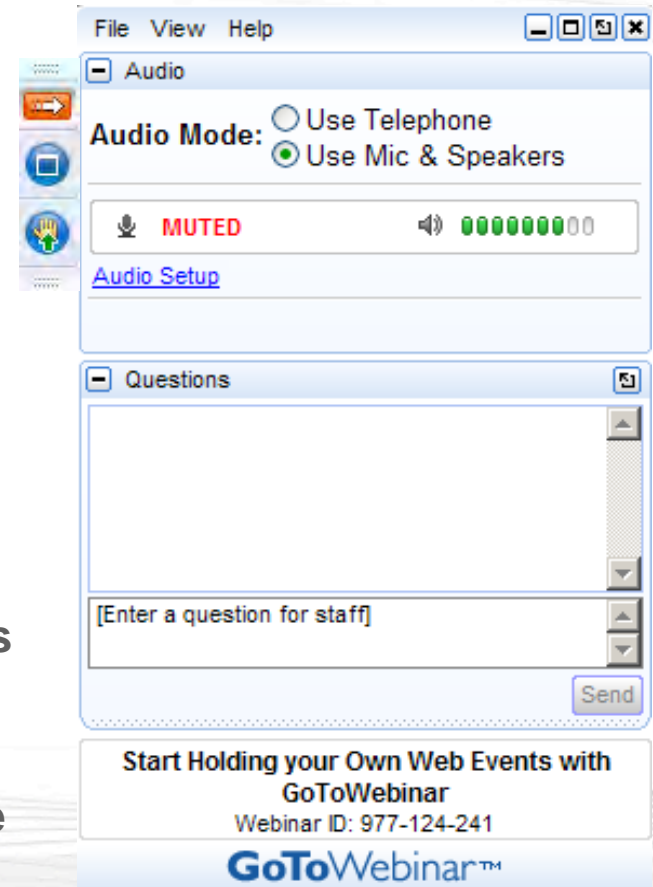
**Gustavo Gonzalez, CTO**

[gfgonzalez@itconvergence.com](mailto:gfgonzalez@itconvergence.com)



## Webinar Mechanics

- Open and close your panel.
- View, select, and test your audio.
- Submit text questions.
- Raise your hand.
- Q&A addressed at the end of the session. Answers will be posted within two weeks on our new LinkedIn Group, EBS Answers: <http://www.linkedin.com/groups/EBS-Answers-4683349/about>
- Everyone will receive an email within 24 hours with a link to view a recorded version of today's session.
- Polling questions will be presented during the session. If you want CPE credit for this webinar, you must answer all of the polling questions.



## Learning Objectives

### Objective 1:

Explain the main differences between Fusion Cloud and Fusion On-Premise.

### Objective 2:

Identify the key differences between choosing between 12.1 or Fusion.

### Objective 3:

Define the “like-to-like” licensing considerations of choosing 12.1 vs. Fusion.

# *e*prentise<sup>®</sup> : Transformation Software for E-Business Suite

*Company Overview: Established 2006 | Helene Abrams CEO*

## *e*prentise Can...

- 🐘 Consolidate Multiple EBS Instances
- 🐘 Change Underlying Structures and Configurations
  - Chart of Accounts, Other Flexfields
  - Inventory Organizations
  - Operating Groups, Legal Entities, Ledgers
  - Calendars
  - Costing Methods
- 🐘 Resolve Duplicates, Change Sequences, IDs
- 🐘 Separate Data

## ...So Our Customers Can:

- 🐘 Reduce Operating Costs and Increase Efficiencies
  - Shared Services
  - Data Centers
- 🐘 Adapt to Change
  - Align with New Business Initiatives
  - Mergers, Acquisitions, Divestitures
  - Pattern-Based Strategies
    - Make ERP an Adaptive Technology
- 🐘 Avoid a Reimplementation
- 🐘 Reduce Complexity and Control Risk
- 🐘 Improve Business Continuity, Service Quality and Compliance
- 🐘 Establish Data Quality Standards and a Single Source of Truth

# Presenter

**Gustavo González**



**IT Convergence,**

**Chief Technology Officer**

Co-Author of “Oracle E-Business Suite  
Financial Handbook Third Edition”  
McGraw-Hill / Oracle Press

# Global Reach, Local Expertise





# Taking Our Own Medicine

Used the  
E-Business  
Suite since  
2004

Upgraded  
to R12  
in January  
2009

Implemented  
OBIEE  
in January  
2010

R12.2 Beta  
Program  
in January  
2012

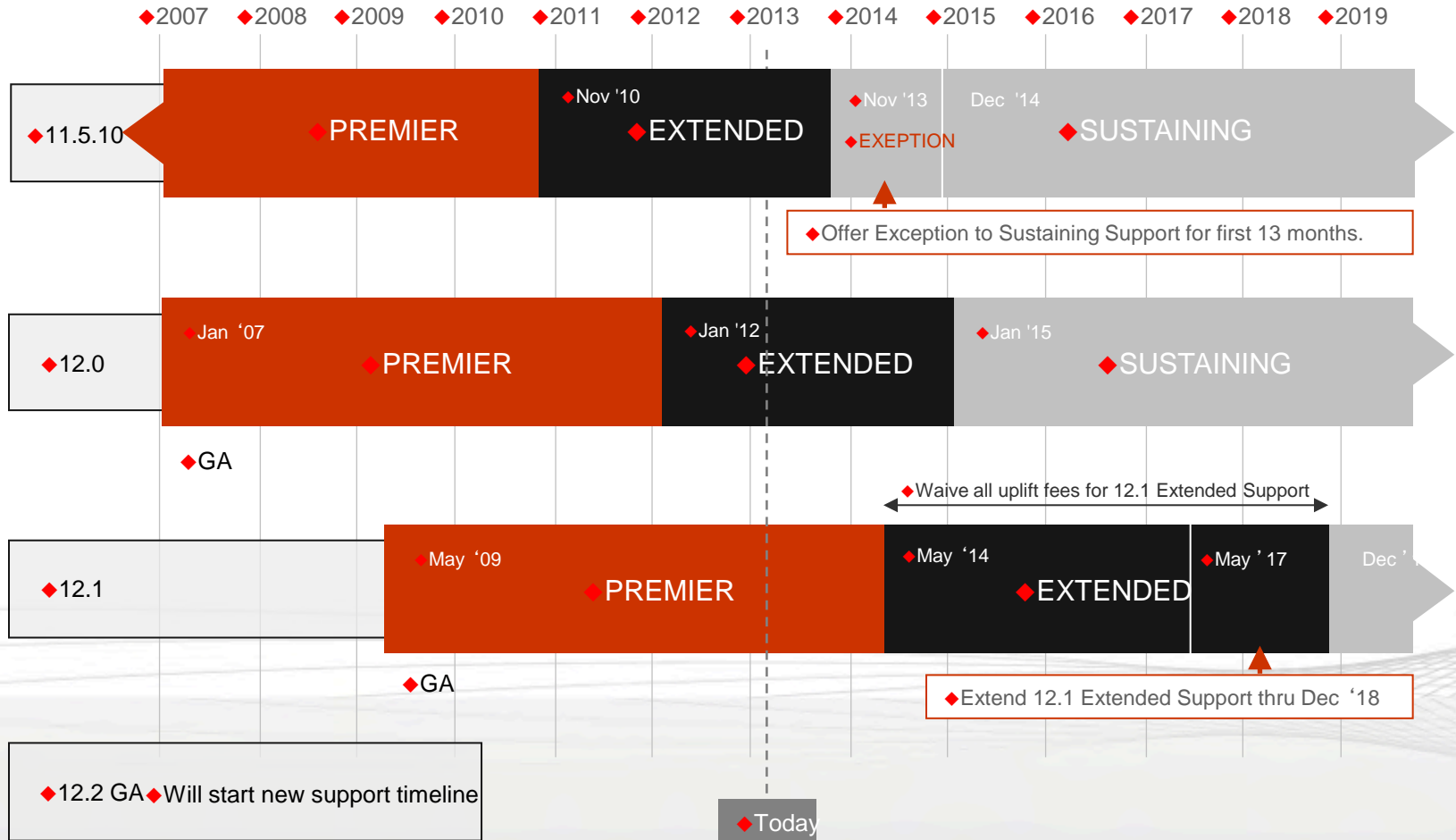
Oracle Fusion  
Applications  
in March  
2012

**And we host our systems running Oracle VM**



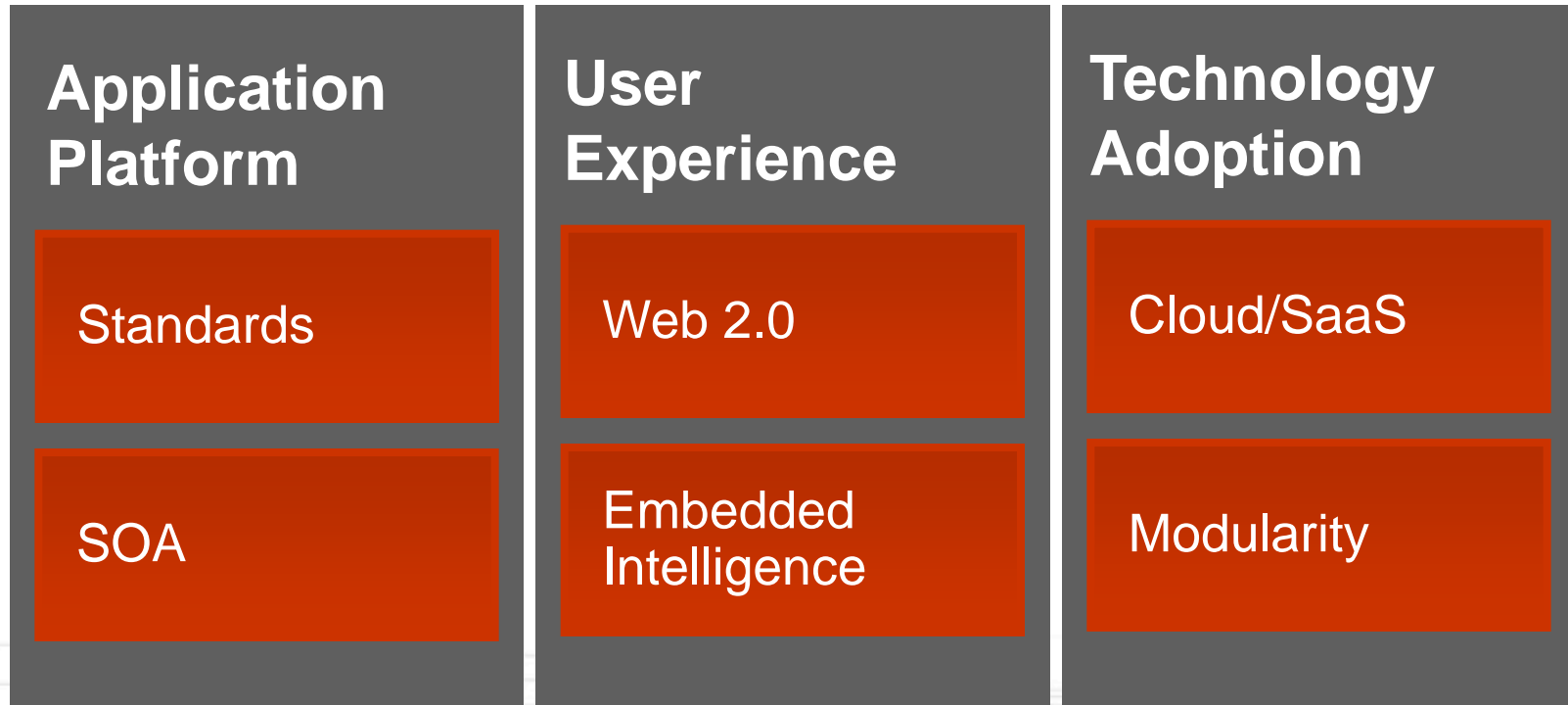
# Oracle E-Business Suite Support Timelines

## Updated Support Policies for 11.5 and 12.1

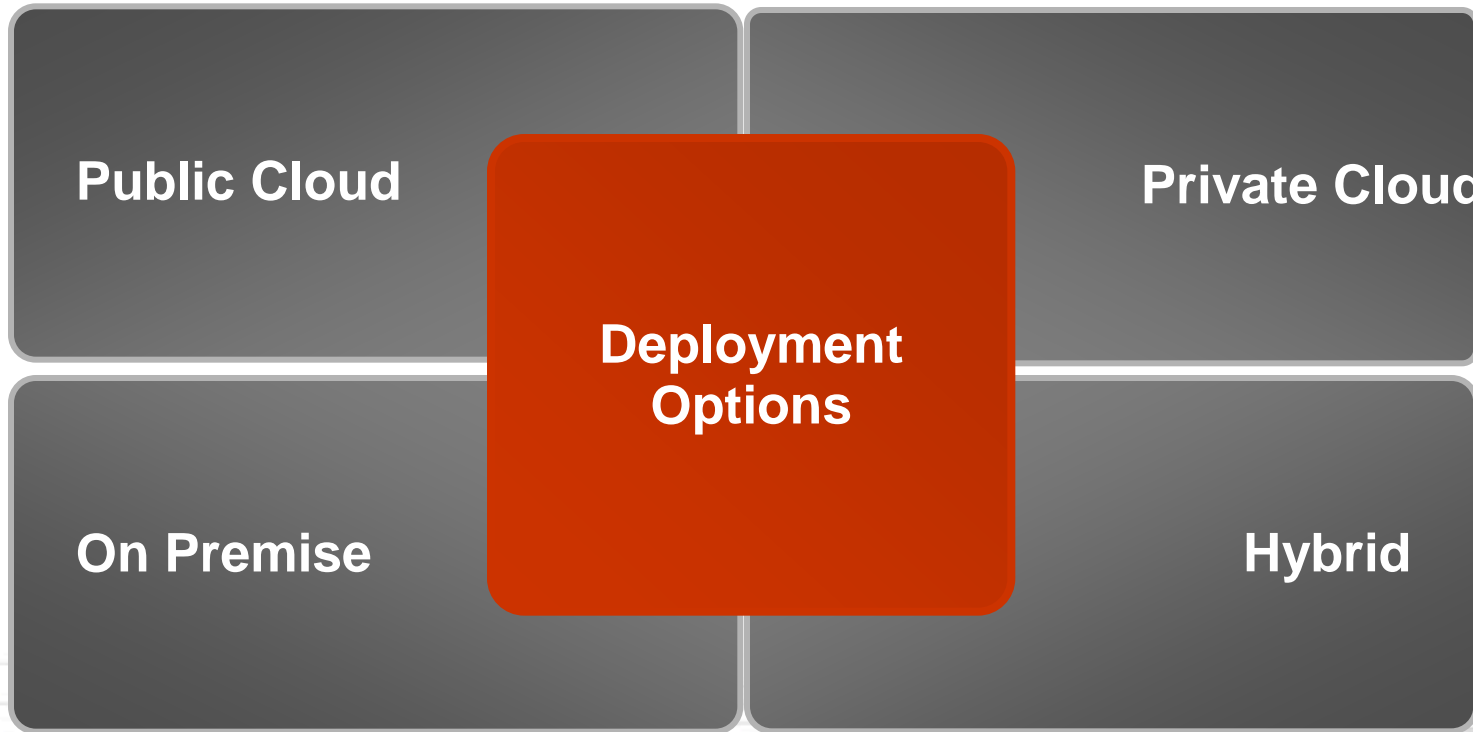




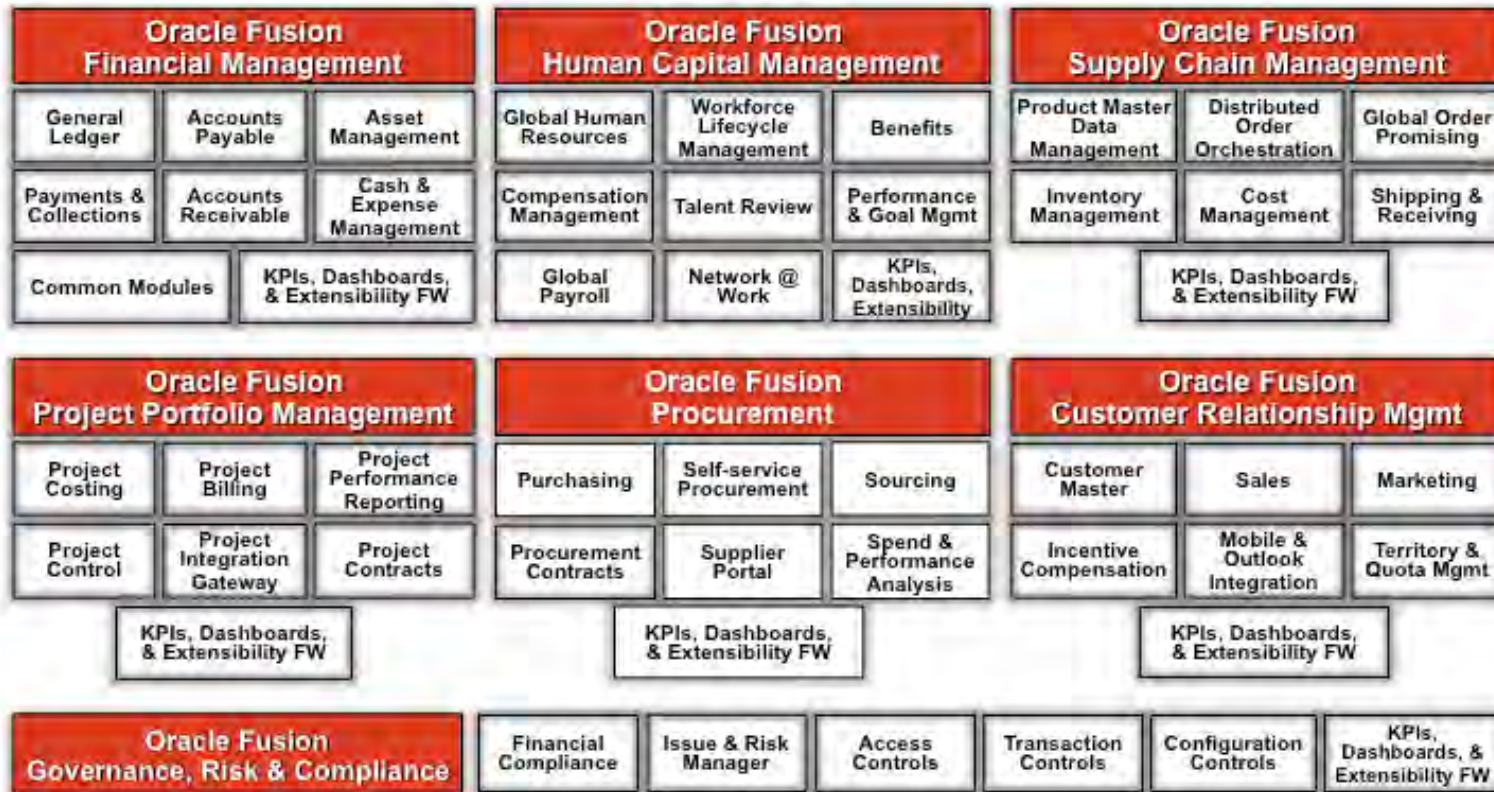
# Oracle Fusion Applications



# Deployment Options



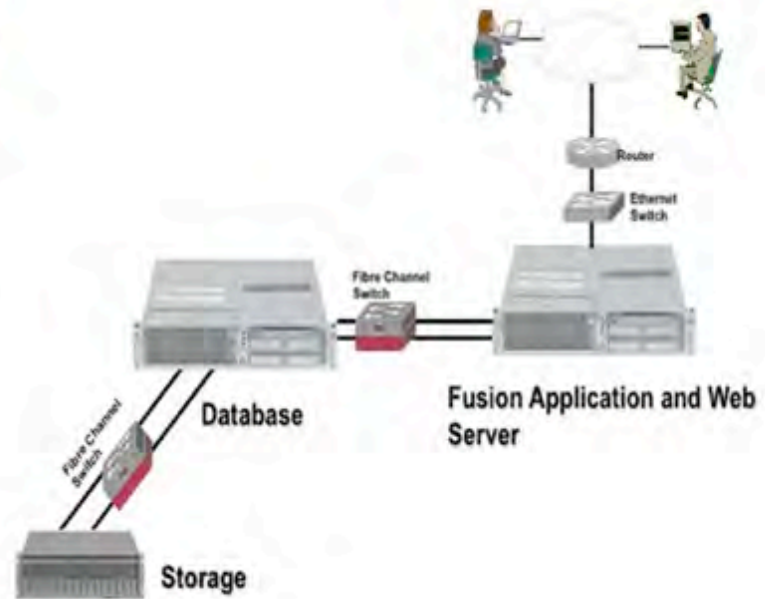
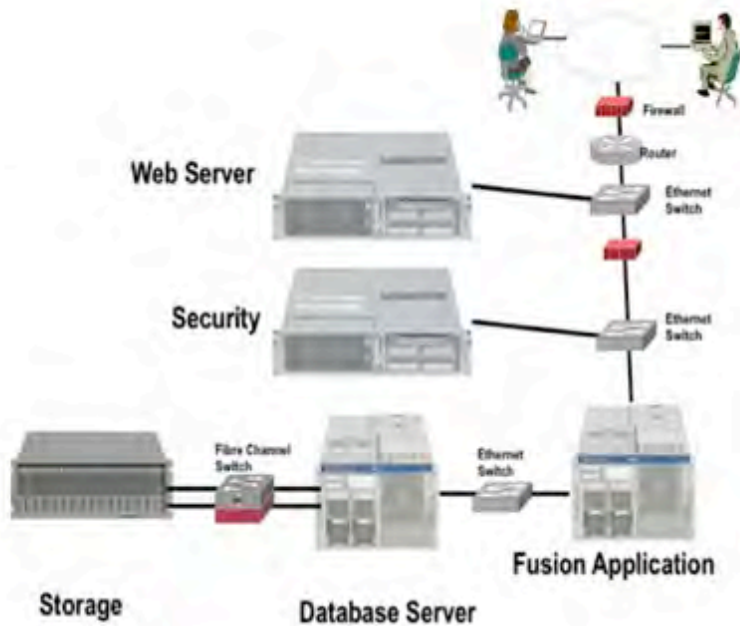
# Choice of Functionality



# Deployment Example

Production

Development & QA



# Poll Question

# Technology & Licensing

**SOA Suite for Oracle  
Middleware for  
Oracle Applications**

**Oracle WebCenter  
Portal for Oracle  
Applications**

**Business Intelligence  
Foundation Suite for  
Oracle Applications**

**Identity and Access  
Management Suite  
Plus for Oracle  
Applications**

**Oracle  
GoldenGate**

**Oracle Fusion  
Transactional  
Business Intelligence**

**WebLogic  
Suite**



# The New Standard for Work



## Field Studies

700 users

- 180 roles
- 6 countries
- E-Business Suite, Siebel, PeopleSoft, JD Edwards

## User Experience Program

1,000 Customers

## Usability Testing

4,000 Hours

- 18 usability labs
- 8 locations worldwide
- Recording of eye-hand-screen behavior

Up to 60% Productivity Gain\*

\* Estimate based on models



# New Standard for Adoption

Exception-based Management

What do I need to know?



What do I need to do?



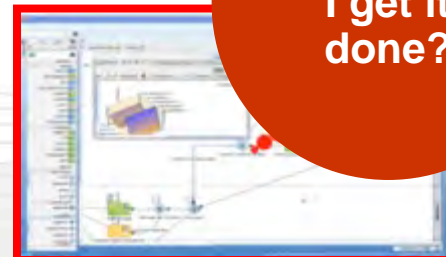
Embedded Business Intelligence

Configurable Applications & Processes

Who do I need to reach?



How do I get it done?

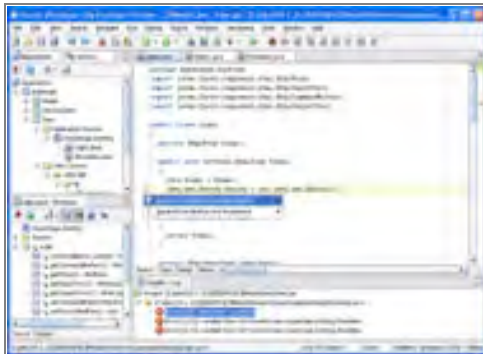


Embedded Collaboration

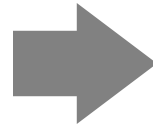
# JDeveloper & Web Center

## Design Time

Design Time

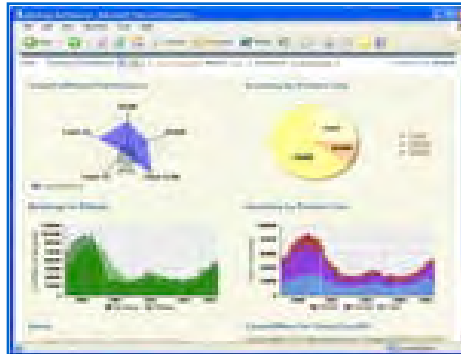


- Declarative Editors
- Design Time Re-Use
- Business Metadata Dictionary
- Unified Metadata Management



## Runtime

Browser



Page Editor

Rules Editor

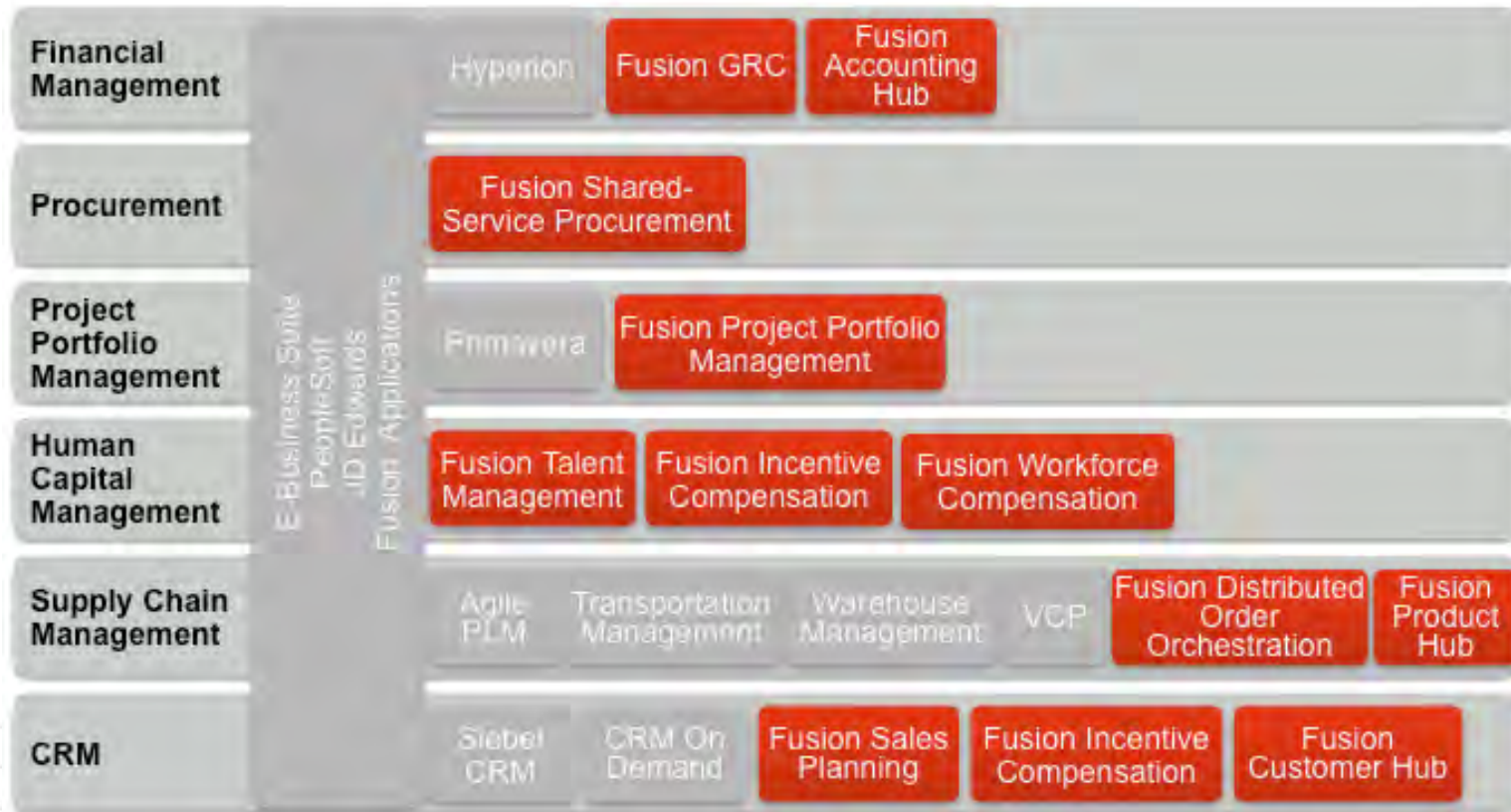
Notifications  
Personalization

- DT@RT Editors
- Customization Layers
- Sandbox & Versioning
- Business Metadata Dictionary
- Unified Metadata Management

# Reporting and Analysis

REPORTING NEED	SOLUTION
Professional quality, boardroom ready financial statements with live drilldowns to source transactions. Exception-based account monitoring with multi-dimensional analysis	Financial Reporting Center
Spreadsheet-based financial reporting and ad hoc queries with multi-dimensional analysis, pivoting, and drilldown	Smart View
High volume operational reporting	BI Publisher
Easy-to-use ad hoc queries of transactions with live drilldowns to transactions	Oracle Transactional Business Intelligence (OTBI)
KPIs, metrics, and highly summarized queries from a data warehouse	OBIA

# Co-existence Strategy



# Embedded Intelligence within Business Transactions

## Embedded Intelligence

- Real-time analytics give advice to complete work
- Information always in context and applicable to the transaction at hand
- Visual cues preemptively guide actions

## Journals

- View projected account balances before posting

## Payables Invoices

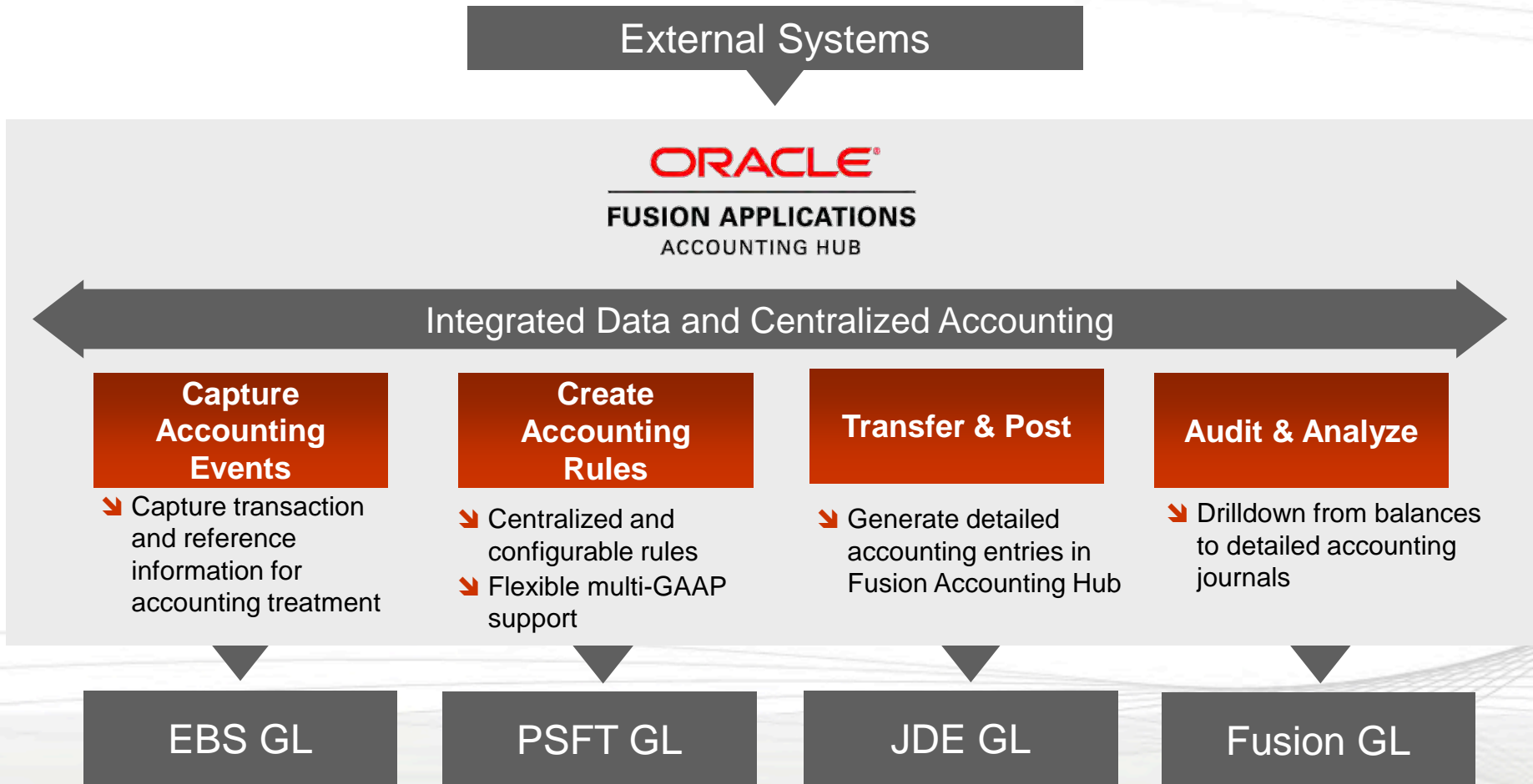
- View supplier holds
- Identify previously matched lines to prevent overbilling & errors

## Receivables Receipts

- Intelligently apply receipts with rules-driven recommendations



# Fusion Accounting Hub





# Fusion Accounting Hub

## Capture transaction information used to create accounting

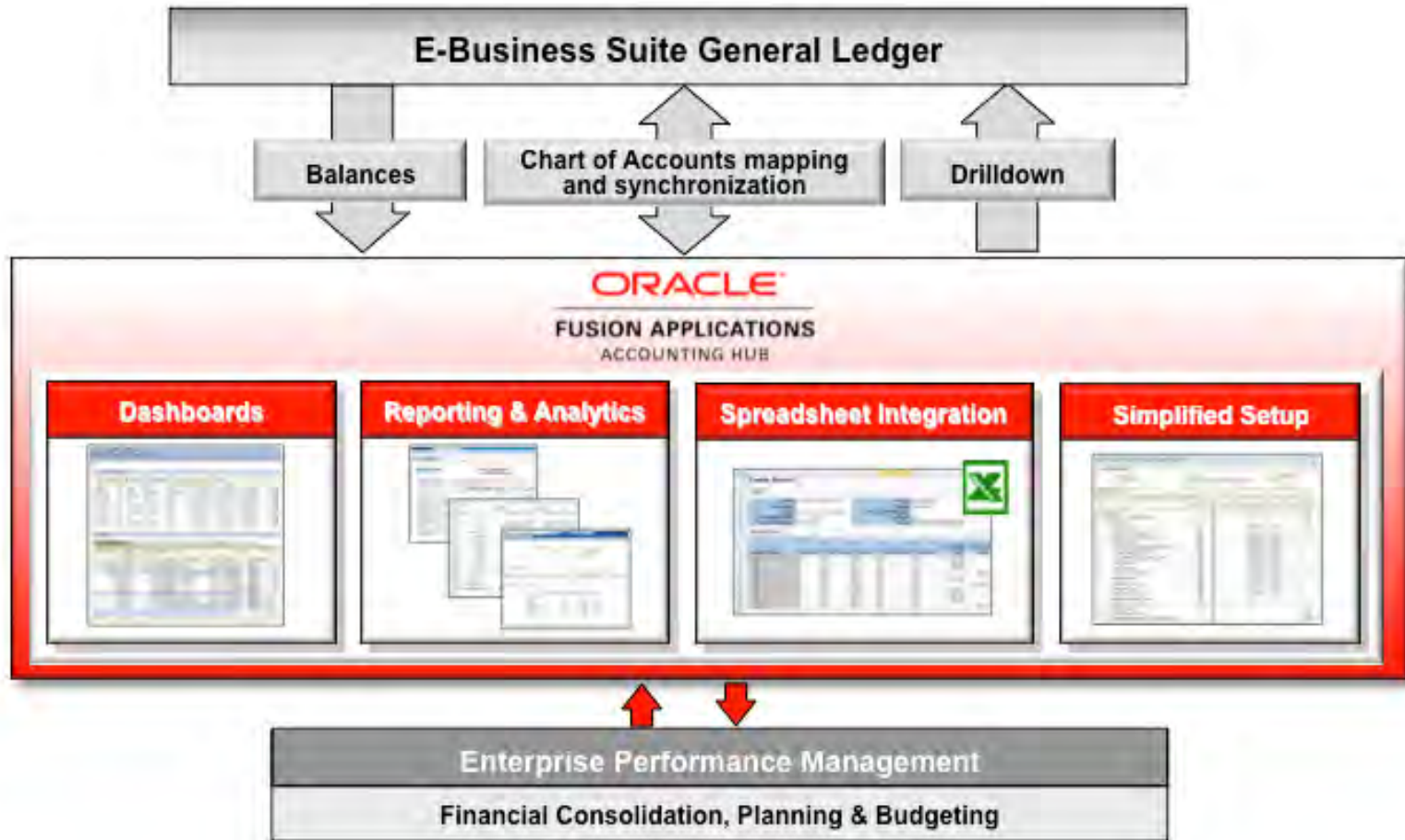
Highly configurable to satisfy all transaction capture and accounting representation requirements

Open interface for multiple data sources

Highly scalable to accommodate high data volume



# Financial Accounting Hub - Coexistence



# Information-Driven Dashboards and Work Areas

What I need to know

General Accounting Dashboard  
Data Access Set: Vision Foods - USA Ledger. [Change]

Edit

Accounts to Monitor

Ledger	Co	Dept	Acct	Sub-Acct	Mar-10	Mar-09	Change	Change (%)
Vision USA	01	Sales	Commissions	Regular Hours	4,187,000.39 USD	5,300,000.60 USD	-1,113,000.21 USD	-21.0
Vision USA	01	<BLANK>	1110	0100	1,900,900.00 USD	1,200,589.90 USD	700,310.10 USD	58.3
Vision Farms	01	490	Employee Exp	0000	1,584,066.00 GBP	1,200,050.00 GBP	384,016.00 GBP	32.0
Vision USA	01	Total Dept	Total Expenses	0000	610,000.00 USD	500,000.00 USD	110,000.00 USD	22.0
Vision Farms	02	Total Dept	<BLANK>	0000	25,765.00 GBP	49,800.00 GBP	-24,035.00 GBP	-48.3
Vision USA	02	490	8890	0100	18,050.00 USD	15,000.50 USD	3,049.50 USD	20.3
Vision USA	03	HR & Admin	<BLANK>	2099	2,627.00 USD	2,500.00 USD	127.00 USD	5.1

➤ Be reminded of information to help you make better decisions

What I need to do

Journals

Requiring Attention (15) Requiring My Approval (0) Pending Approval from Others (0) Incomplete (3) Import Errors (0)

Accounted	Source	Journal Batch	Account Period	Iss Error Date	Last Updated By	L
6,089,425.50 USD	6,089,425.50 USD Manual	01205	Mar-10	Err 03/19/2010	FINUSER9	V
5,184,841.39 USD	5,184,841.39 USD AutoCopy	Manual A 20080007 1385	Mar-10	Err 02/21/2010	FINUSER8	V
515,992.53 USD	515,992.54 USD AutoCopy	rounding disabled 16-MAR	Mar-10	Err 03/16/2010	FINUSER7	V
21,000.00 USD	21,000.00 USD Manual	MK_Batch_147	Mar-10	Err 03/18/2010	FINUSER15	V
1,700.50 USD	1,700.50 USD Manual	K007	Mar-10	Err 03/16/2010	FINUSER7	V
1,500.00 USD	1,500.00 USD Manual	K001	Mar-10	Err 02/21/2010	FINUSER9	V
550.00 USD	550.00 USD Manual	GLJE064-6	Mar-10	Err 03/18/2010	FINUSER15	V
300.00 USD	300.00 USD Manual	FUNBR03171	Mar-10	Err 03/18/2010	FINUSER15	V
199.98 USD	199.98 USD Global Inte	3721 Global Intercompany	Mar-09	Err 03/19/2010	GENERAL_ACCOUNT	V
132.06 USD	132.06 USD Spreadshe	KR99 Spreadsheet A 1312	Mar-10	Err 03/18/2010	FINUSER1	V

➤ Obtain a count of issues to understand work volume

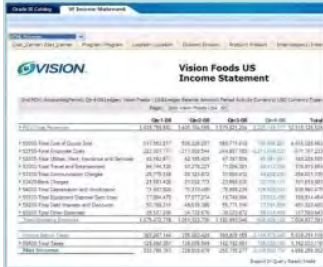
➤ Obtain complete visibility of self-monitoring processes

➤ Be notified of processing errors

➤ Quickly resolve exceptions, expedite approvals and focus on analyzing results

# Poll Question

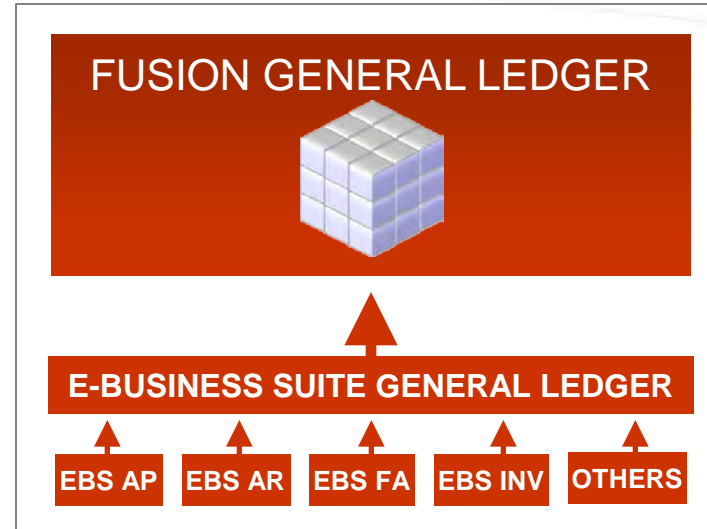
# Reporting and Analytics



**Board quality financial statements**

	A	B	C
1		Aug-09	Aug-08
2	REV	(5,858,622,262.77)	(5,424,014,877.85)
3			
4	52125	1,577,819,733.69	1,464,484,037.69
5	52145	522,839,829.32	488,161,267.65
6	50000	2,100,659,563.01	1,952,645,305.24
7	52150	452,548,291.47	420,361,192.76
8	52151	234,116,125.80	218,597,833.30
9	52152	180,089,270.88	169,144,432.48
10	52153	36,017,807.69	33,628,842.39
11	52150	452,548,291.47	420,361,192.76
12	52151	234,116,125.80	218,597,833.30
13	52152	180,089,270.88	169,144,432.48
14	52153	36,017,807.69	33,628,842.39
15	52155	902,771,495.84	840,722,300.93
16	52305	174,527,490.84	162,719,596.37
17	53000	261,869,176.80	244,080,404.91
18	Total Expenses	5,245,370,718.17	4,881,612,599.31
19			

**Ledger queries**



## Multiple Reporting Methods

- Self-service reporting and analysis against real-time accounting information

## Multi-Dimensional Balances

- Pivot and drill to any level from anywhere within date-effective hierarchies. Pre-aggregated balances for instantaneous reporting

## Up-to-the-minute Results

- Real-time updates to multi-dimensional balances that are embedded in the GL hyperledger architecture



# Reporting and Analytics

**Secure self-service reporting and analytics against real-time data**

- Centrally access live reports and report snapshots
- Efficiently distribute reports to authorized users
- Perform multi-dimensional analysis and drill down from anywhere

**Reporting Center**  
Data Access Set: Vision Foods - USA Ledger [Change]

**Overview**

**Financial Reports**  
Folder Path: Root > users > Finance

**Live Reports and Books** | **Published Snapshot Reports and Books**

**View pre-published snapshots for point-in-time reporting**

View Report	Report or Book	Workspace Path	Owner	Created On	Last Modified
	VF CAD - Balance Sheet	/My Folders/Customer Validation	Administrator	08/19/2009	08/19/2009
	VF CAD - Income Statement	/My Folders/Customer Validation	Administrator	08/19/2009	08/19/2009
	VF US - Income Statement	/My Folders/Customer Validation	Administrator	08/17/2009	08/17/2009
	VF US - Balance Sheet	/My Folders/Customer Validation	Administrator	08/17/2009	08/17/2009
	VF US - Cost Center Book	/My Folders/Customer Validation	Administrator	08/19/2009	08/19/2009
	VF US - Expenses by Cost Center Tree Version	/My Folders/Customer Validation	Administrator	09/14/2009	09/14/2009
	VF US - Foreign Currency Trial Balance	/My Folders/Customer Validation	Administrator	08/19/2009	08/19/2009
	VF US - Income Statement	/My Folders/Customer Validation	Administrator	10/12/2009	10/12/2009
	VF US-Monthly Book	/My Folders/Customer Validation	Administrator	08/19/2009	08/19/2009

**View live reports**

**View reports in your output of choice**

---

**Account Monitor**

View	Format	Freeze	Detach	Wrap	Account Group	Dept.	Expenses	Comparison Option	Prior Year - PTD	
Ledger	Co	Dept	Acct	Sub-Acct			Mar-10	Mar-09	Change	Change (%)
Vision USA	01	Sales	Commissions	Regular Hours			4,187,000.39 USD	5,300,000.60 USD	-1,113,000.21 USD	-21.0
Vision USA	01	Total Dept	1110	0100			1,900,900.00 USD	1,200,589.90 USD	700,310.10 USD	58.3
Vision Farms	01	490	Employee Exp	0000			1,584,066.00 GBP	1,200,050.00 GBP	384,016.00 GBP	32.0
Vision USA	01	Total Dept	Total Expenses	0000			610,000.00 USD	500,000.00 USD	110,000.00 USD	22.0
Vision Farms	02	Total Dept	Total Expenses	0000			25,765.00 GBP	49,800.00 GBP	-24,035.00 GBP	-48.3
Vision USA	02	490	8890	0100			18,050.00 USD	15,000.50 USD	3,049.50 USD	20.3
Vision USA	03	HR & Admin	1110	2099			2,627.00 USD	2,500.00 USD	127.00 USD	5.1

- Be alerted to account balances that exceed thresholds

# Financial Statements

Inquiry and Reporting  
Data Access Set: Vision Foods - USA Ledger [Change]  
Report: VF US-Qtrly Income Stateme

HTML Preview  
HTML Preview  
PDF Preview  
Export to Excel  
Export In Query Ready Mode  
Export to Word  
Export to Powerpoint  
Refresh  
Preview User Point of View  
Respond to Prompts

**Supports multiple output options:  
(MS Office, PDF, HTML)**

**Income Statement**

	Qtr1-07	Qtr2-07	Qtr3-07	Qtr4-07	Qtr1-08	Qtr2-08	Qtr3-08	Qtr4-08	Total
Revenue	1,843,230,785	1,912,816,979	1,479,129,780	2,092,738,787	1,439,759,860	1,408,184,160	1,879,921,204	2,178,233,334	12,768,317,667
Material Costs	483,250,071	483,596	472,646	531,043	731,781	4,885,440,038			
Employee Costs	208,210,271	203,483,638	207,900,272	207,858,544	244,887,789	337,892,781	1,879,174,968		
Occupancy Cost	40,750,000	40,750,000	40,750,000	40,750,000	40,750,000	40,750,000	40,750,000	40,750,000	322,862,514
<b>Travel &amp; Entertainment</b>	<b>60,449,821</b>	<b>59,081,144</b>	<b>66,380,746</b>	<b>91,473,124</b>					
52386-Mileage Reimbursement	483,596	472,646	531,043	731,781					
52387-Employee Meals	1,208,957	1,191,582	1,327,571	1,829,491					
52388-Entertainment	1,450,792	1,450,792	1,450,792	1,450,792					
53450-Total Domestic and International Travel	56,097,501	54,827,367	61,608,609	67,687,162					
53455-Parking	1,208,977	1,181,603	1,327,593	1,829,432					

**Expand parent to view detail balances**

**Drill down to original transactions**

Export In Query Ready Mode

**Export to Excel for further analysis**

Revenues, Expenses & Income

- Live, interactive financial reporting
- Professional quality, web-based financial reports
- Multi-dimensional analysis, pivoting, and drill down on live data
- Easy to define reports

# Reporting and Analytics

Oracle BI Catalog | VF Expense by Cost Center

HTML Preview

Cost\_Center: Cost\_Center | Program: Program | Location: Location | Division: Division | Product: Product | Intercompany: Intercom

**IT Convergence**  
EXPERIENCE THE POWER OF EXPERTISE

## IT Convergence Expenses by Cost Center Tree Version

**Current Tree Version:**  
ALL VF COST CENTER

**Previous Tree Version:**  
ALL VF COST CENTER

**Current Hierarchy** | **Previous Hierarchy**

Page: EXP-Total Expenses

	Aug-09		Aug-09
ALL VF COST CENTER	4,870,605,520	ALL VF COST CENTER	4,870,605,520
000-None	-44	000-None	-44
300-Sales & Marketing	1,041,682,233	300-Sales & Marketing	1,041,682,233
500-Corporate Office	2,848,466,794	500-Corporate Office	3,828,923,331
520-Finance and Accounting	2,848,466,794	520-Finance and Accounting	2,848,466,794
600-Warehousing Operations	980,456,537	540-Distribution Operations	980,456,537
540-Distribution Operations	980,456,537		

Export | Query Ready Mode

## Date-Effective Trees

- Compare financial results based on past, present, and future organizational changes
- Reports and balances immediately reflect the latest changes to hierarchies

Cost center 540 reorganized under a new parent 600



# Reporting and Analytics

**Inquiry and Reporting**  
Data Access Set: Vision Foods - USA Ledger [Change]

**Detail Balances: 3000-312-3611-1511-41000-1121-1311-0000** [Done]

Ledger or Ledger Set: Vision Foods - USA Ledger  
Account Description: Vision Foods USA-Sales & Marketing CAD-Carvaggio-Guatemala-Total Net: Trade Revenue-San Francisco-Bach-None  
Currency Type: Total  
Currency: USD

Account	Accounting Period	Beginning Balance	Period Activity - PTD	Ending Balance
3231-312-3611-1511-40111-1121-1311-0000	Aug-08	0.00 USD	-1,337,318.62 USD	-1,337,318.62 USD
3111-312-3611-1511-40116-1121-1311-0000	Aug-08	0.00 USD	268,943.16 USD	268,943.16 USD
3231-312-3611-1511-40116-1121-1311-0000	Aug-08	0.00 USD	327,774.27 USD	327,774.27 USD
3888-312-3611-1511-40117-1121-1311-0000	Aug-08	0.00 USD	-42,357.93 USD	-42,357.93 USD
3111-312-3611-1511-40118-1121-1311-0000	Aug-08	0.00 USD	-274,321.94 USD	-274,321.94 USD
3251-312-3611-1511-40118-1121-1311-0000	Aug-08	0.00 USD	-304,324.95 USD	-304,324.95 USD
3241-312-3611-1511-40110-1121-1311-0000	Aug-08	0.00 USD	-3,749,062.45 USD	-3,749,062.45 USD
3251-312-3611-1511-40110-1121-1311-0000	Aug-08	0.00 USD	-3,246,139.57 USD	-3,246,139.57 USD
3121-312-3611-1511-40111-1121-1311-0000	Aug-08	0.00 USD	-1,131,576.13 USD	-1,131,576.13 USD
	Aug-08	0.00 USD	-607,390.76 USD	-607,390.76 USD

**Drill to detail balances**

**Inquiry and Reporting**  
Data Access Set: Vision Foods - USA Ledger [Change]

**Journal Lines: 3111-312-3611-1511-40116-1121-1311-0000** [Done]

Ledger: Vision Foods - USA Ledger  
Account Description: Vision Foods Marketing - US-Sales & Marketing CAD-Carvaggio-Guatemala-Discounts-San Francisco-Bach-None

Journal Batch	Journal	Line	Source	Category	Entered	Debit	Credit
Manual A 20080010 14140	Adjustment	3,643	Manual	Adjustment			-2,396,254 JPY
Manual A 20080010 14140	Adjustment	3,644	Manual	Adjustment			-169,224.53 USD
Manual A 20080010 14140	Adjustment	3,645	Manual	Adjustment			-37,229.40 GBP
Manual A 20080010 14140	Adjustment	3,646	Manual	Adjustment			-15,230.21 EUR

**Then to journal lines and the original transaction**

## Ledger-Based Reporting and Queries

- Quickly define financial reports and ad hoc queries within a familiar desktop environment
- Integrate data directly to MSWord and PowerPoint; dynamically refresh live results with a single click
- Perform multi-dimensional analysis, pivoting, and drill down
- Save reports and queries offline, then reconnect to live data by opening the spreadsheet

# Reporting and analytics

**ORACLE Fusion Applications** Personalization Help Sign Out **Robert Kennedy**

Home Navigator Recent Items Favorites Tags Watchlist Group Spaces All Search...

**Inquiry and Reporting**  
Data Access Set: Vision Foods USA Ledger Set [Change]

**Inquire and Analyze Balances** Done

**Account Inspector**

Cost_Center	Qtr 4-09		Jul-10		Aug-10		Sep-10		
	500	500	500	500	510	520	540	541	
53000	81,016,644.19	24,463,017.49	27,062,577.99	29,491,048.71	0.00	20,051,732.17	9,431,316.54	3,848,833.48	
52386	652,996.80	197,073.91	217,928.71	237,994.18	0.00	140,226.68	97,767.50	39,730.07	
52387	1,574,304.02	475,752.38	527,245.74	571,305.90	0.00	429,579.35	141,726.55	71,613.06	
52388	1,890,024.18	572,751.00	628,716.97	688,556.21	0.00	515,845.17	172,711.04	85,424.53	
52390	0.00	0.00	0.00	0.00	0.00	0.00	0.00	0.00	
53450	75,320,816.22	22,744,547.67	25,160,078.45	27,416,190.10	0.00	18,531,695.67	8,884,494.43	3,580,393.58	
53430	37,495,602.60	11,338,133.15	12,512,908.22	13,644,561.23	0.00	9,069,758.41	4,574,802.82	1,881,355.52	
53440	37,825,213.62	11,406,414.52	12,647,170.23	13,771,628.87	0.00	9,461,937.26	4,309,691.61	1,699,038.06	
53455	1,578,502.97	472,892.53	528,608.12	577,002.32	0.00	434,385.30	142,617.02	71,672.24	
53456	0.00	0.00	0.00	0.00	0.00	0.00	0.00	0.00	

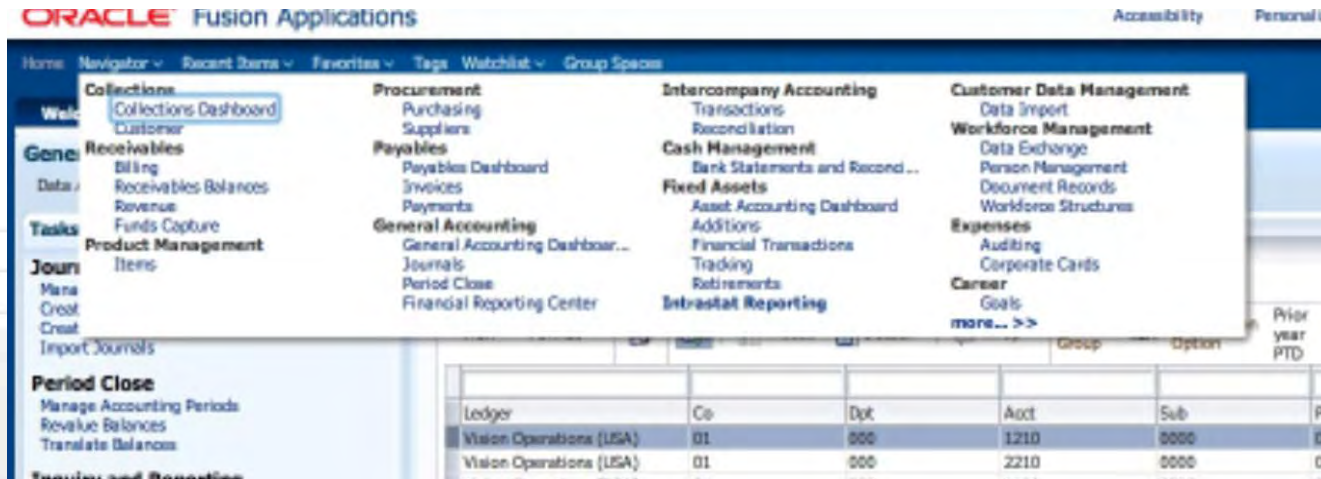
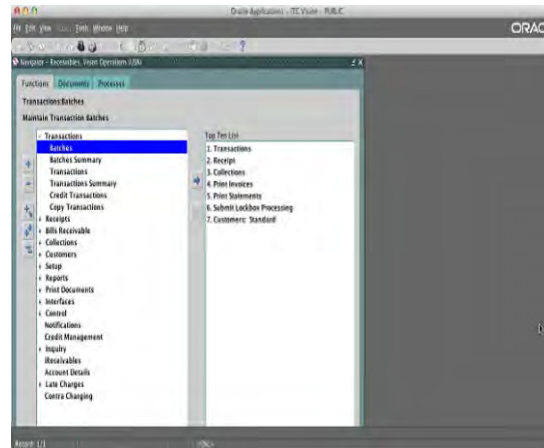
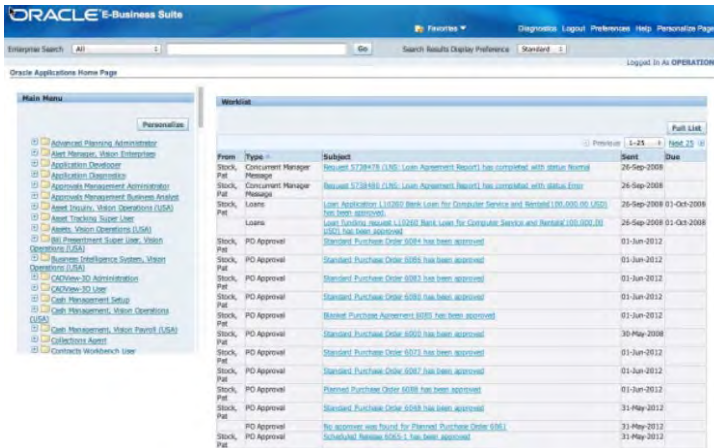
**Page Level Dimensions**

- Ledger: Vision Foods - USA Ledg
- Company: 3000
- Program: Program
- Location: Location
- Division: Division
- Product: Product
- Intercompany: Intercompany
- Scenario: Scenario
- Balance Amount: Period Activity
- Amount Type: Amount Type
- Currency: USD
- Currency Type: Currency Type

Submit

# Poll Question

# Navigation





# Roles

ORACLE Identity Manager - Delegated Administration

Accessibility Help Sign Out  
Signed in as PAAAdmin

The screenshot displays the Oracle Identity Manager Delegated Administration interface. The user 'ap\_test\_user1' is selected, and the 'Roles' tab is active. A table lists available roles, with 'GL\_GENERAL\_ACCOUNTANT\_JOB' selected. Below the table, the 'Role Summary Information' for the selected role is shown.

Role Name	Description
ALL USERS	Default role for all users
AP_ACCOUNTS_PAYABLE_MANAGER_JOB	Manages Accounts Payable department i
GL_GENERAL_ACCOUNTANT_JOB	Records and reports financial transactio
GL_GENERAL_ACCOUNTANT_JOB_Vision Operati...	Role General Accountant, implementing t
GL_GENERAL_ACCOUNTANT_JOB	Records and reports financial transactio
Transactional Business Intelligence Worker	Analyzes Transactional Business Intellig
Business Intelligence Applications Worker	Analyzes Business Intelligence Applicati
ASM_FUNCTIONAL_SETUPS_USER_ABSTRACT	Uses the functional user overview, and a

**Role Summary Information**  
This is summary information for the role selected above.

Role Name	GL_GENERAL_ACCOUNTANT_JOB	Assigned On
Display Name	General Accountant	
Role Namespace	cn=FusionGroups,ou=Groups,dc=us,dc=oracle,dc=com	
Description	Records and reports financial transactions and manages revenue, expenses, asset, liability and equity accounts. Responsible for recording accounting adjustments, accruals, allocations, currency revaluations and translations.	
Membership Type	Direct Role	

Copyright © 2012, Oracle and/or its affiliates. All rights reserved.

About

# Functional Setup Manager (FSM)

ORACLE Fusion Applications Accessibility Personalization Administration » Sign Out FAAdmin

Home Navigator Recent Items Favorites Tags Group Spaces

**Setup and Maintenance**

- Tasks
  - Implementations
    - Getting Started
    - Configure Offerings
    - Manage Implementation Projects
  - Setup Data Export and Import
    - Manage Configuration Packages
    - Manage Export and Import Processes
  - Implementation Objects
    - Manage Offerings and Options
    - Manage Features
    - Manage Business Processes
    - Manage Task Lists and Tasks
    - Manage Business Objects
  - Topology Objects
    - Manage Domains
    - Manage Enterprise Applications
    - Manage Modules
  - Topology Registration
    - Review Topology
    - Register Enterprise Environments
    - Register Databases
    - Register Domains
    - Register Enterprise Applications
    - Register Setup Portlet Producers
    - Activate Optional Enterprise Applications
- Search: Tasks
 

Name

Advanced

**Overview**

**Implementation Projects** Assigned Implementation Tasks All Tasks

Actions View Format Freeze Detach Wrap Show My open projects

Name	Unassigned Tasks	Not Started	In Progress	Completed	Execution Frozen	Submitted	Completed with Errors	Completed with Warnings	Total	Status	At
Implementation Project-1	294	362	87						449		F
HR	368	368	300	0	0	0	0	0	668		F
PS	203	203	208	0	0	0	0	0	411		F
Test - frozen	0	0	0	0	0	0	0	0	0		F

Columns Hidden 4

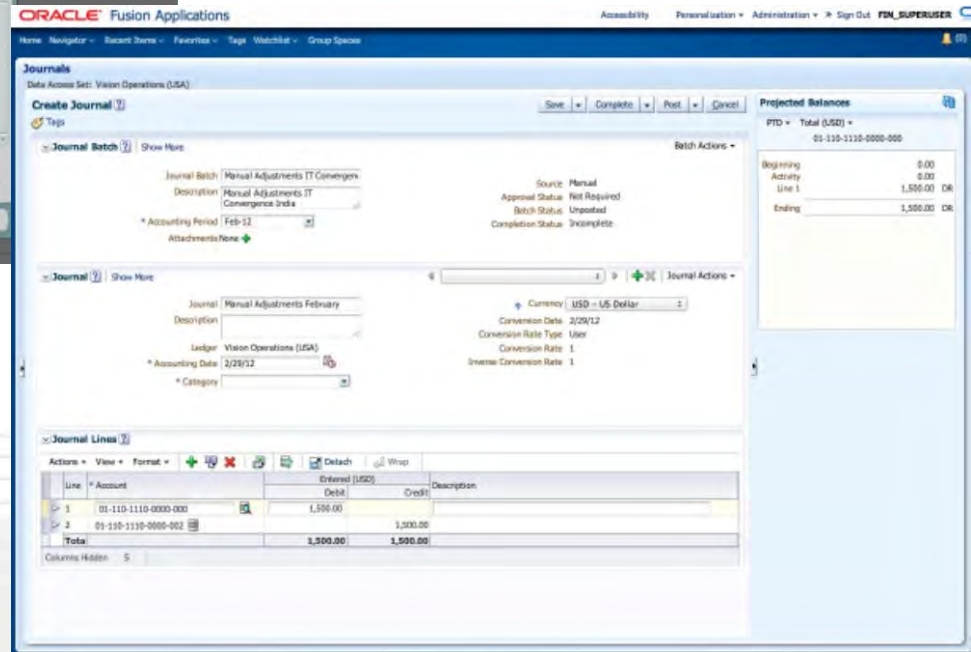
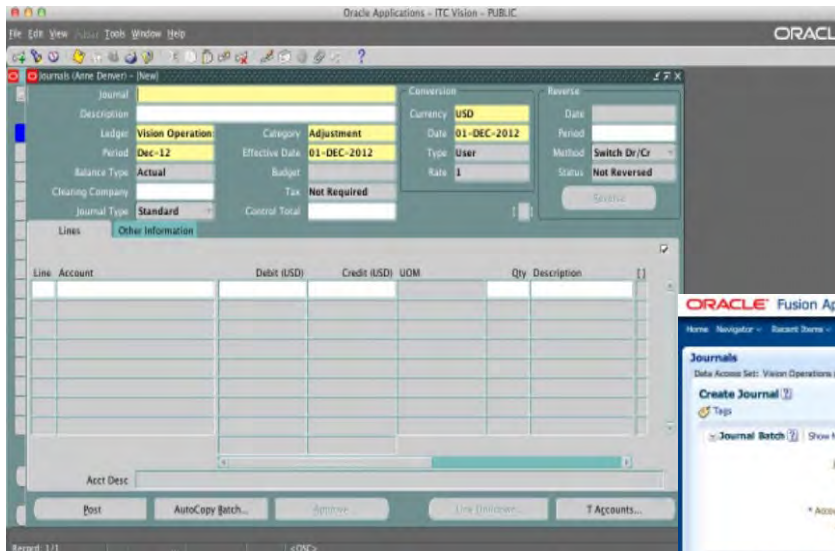
**Implementation Project-1: Implementation Project Details**

Assignment Status Assignment Status by Task List Resource Status Assignment Details

**Assignments by Due Date**

**Assignments by Status**

# Journal entry





## Key success factors

**Productive End User Interface supports casual user with simplified access and standardized transactions**

**Protect data and enforce controls with centralized security, audit and controls**

**Business process models and design patterns bring clarity to tasks and simplify configuration for business needs**

**Metadata driven platform to lower your IT costs and increase agility**

**Analysis and reporting platform delivers consistent, accurate information for management / external reporting, for timely insight into financial, procurement, human resources & project costs**



## Stay Connected

Register for our  
coming **webcasts**



Join an **Oracle  
Application  
Workshop** coming to a  
city near you



**Facebook**

[www.facebook.com/itc.corp](http://www.facebook.com/itc.corp)



**Twitter**

[@IT\\_Convergence](https://twitter.com/IT_Convergence)



**Blog**

[itconvergence.blogspot.com](http://itconvergence.blogspot.com)



**LinkedIn**

[www.linkedin.com/company/it-convergence](http://www.linkedin.com/company/it-convergence)



**YouTube**

[www.youtube.com/user/ITConvergenceMKT](http://www.youtube.com/user/ITConvergenceMKT)

The logo features the text "IT Convergence" in a bold, sans-serif font. "IT" is in black, and "Convergence" is in red. A grey swoosh starts under the "I", goes up and over the "C", and then curves back down under the "e".

**IT Convergence**<sup>®</sup>

EXPERIENCE the power of results